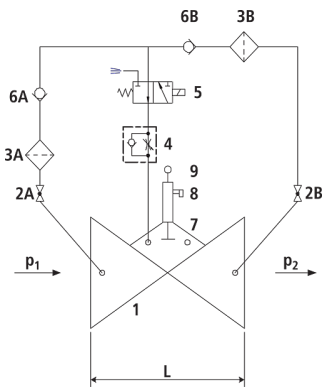


Pump protection valve with mechanical non-return flap

1705



Components

- 1: Main valve
- 2: Ball valve (A, B)
- 3: Filter (A, B)
- 4: Throttle check valve
- 5: Electric solenoid valve
- 6: Check valve (A, B)
- 7: Mechanical non-return flap
- 8: Electric position indicator
- 9: Accessories (optional)

Physical characteristics

- The main valve is a hydraulically operating diaphragm valve. The work energy is the inherent medium.
- Most valve types operate purely hydraulically without any foreign energy.

Application

- To use in drinking water systems (other media after consultation)
- Actuation of the valve with the pump control system
- Protection of the pump against overloading caused by a no-load operation

Mode of operation

- The pump protection valve opens with a time delay after the pump is started up. Consequently the network pressure increases to the full pump pressure before the valve opens. With a controlled stopping of the pump, the valve closes before the pump stops. The opening and closing speeds can be set on the throttle non-return valve. In the event of a power failure, the fitted mechanical non-return flap prevents the valve from closing too quickly and consequently a backflow to the pump.

Product information

- To calculate the dimensions of the valve please refer to the following information:
- Maximum and minimum inlet pressure (static and dynamic pressure ratios)
- Existing counterpressure
- Required flow rate, pump capacity
- Maximum permissible loss of pressure
- Voltage information for the solenoid valve
- Available line diameters and lengths
- Construction of the valve (straight or angle design)
- The controller is to be provided by the customer.
- For the calculation basis, information on the loss of pressure and the characteristic values of the valve, please refer to the end of Chapter E.

Design

- Design according to DIN EN 1074
- Construction length acc. to DIN EN 558
- Flange mass according to DIN 1092-2, to PN 25 DN 300
- Pressure levels: PN 10 or PN 16 to DN 300, PN 25 to DN 200, higher pressures on request.
- Nominal widths DN 50, DN 80, DN 100 and DN 150 available in angular design
- Nominal widths 1 ½" and 2" with threaded connection (female thread)
- Medium temperature up to 40°C

Installation and assembly

- The pump protection valve is installed in the feed pipe of the pipe. A shut-off valve is to be installed on the outlet side.

Vantages

- Maintenance-free, non-rusting valve seat
- Pressed-in seat
- EWS-coating according to RAL GSK

Article No.	DN	PN (bar)	L (mm)	weight (kg)	Availability
1705007000	1 1/2"	16	210	9.000	on demand
1705008000	2"	16	210	9.000	on demand
1705040000	40	16	200	16.250	on demand
1705050000	50	16	230	16.750	on demand
1705065000	65	16	290	21.800	on demand
1705080000	80	16	310	27.900	on demand
1705100000	100	16	350	35.900	on demand
1705125000	125	16	400	52.000	on demand
1705150000	150	16	480	76.000	on demand
1705200000	200	10	600	115.100	on demand
1705200016	200	16	600	115.100	on demand
1705250000	250	10/16	730	247.500	on demand
1705300000	300	10/16	850	356.000	on demand